

전통한복, 생활한복 모두 무료관람 대상 포함



전통한복

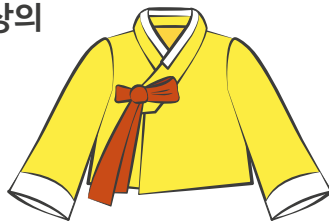
생활한복

상의(저고리)와 하의(치마, 바지)를 기본으로 함



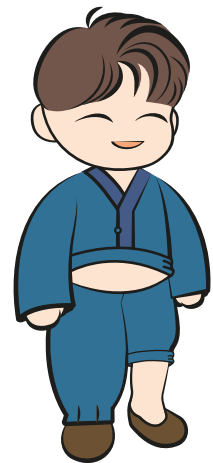
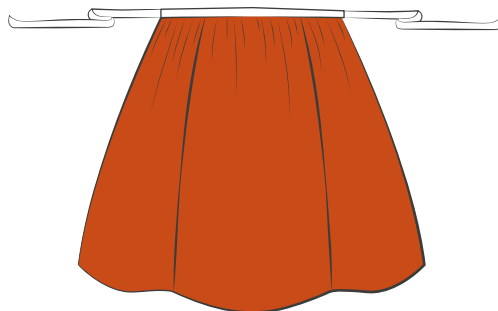
두루마기만 걸친 경우에는
한복으로 인정하지 않으며,
상·하의를 갖춰 입어야 함

상의



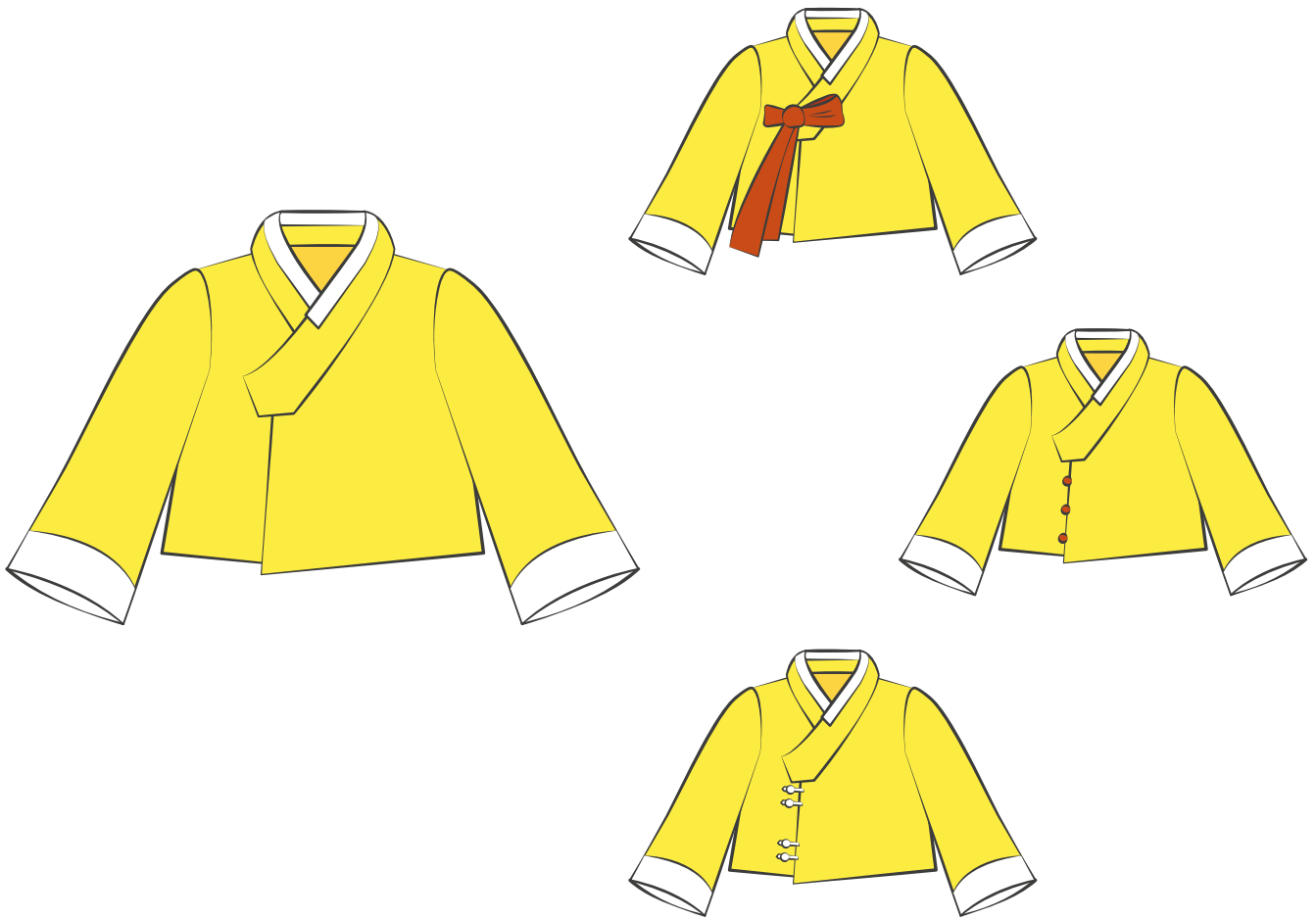
여미는 깃의 저고리

하의



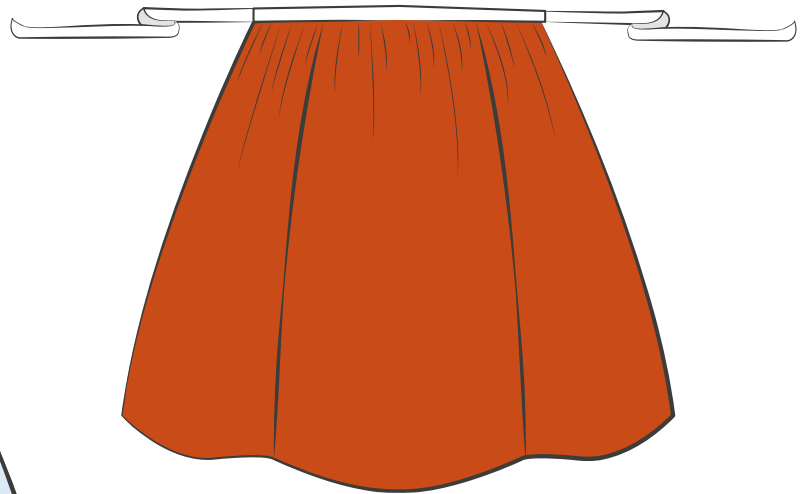
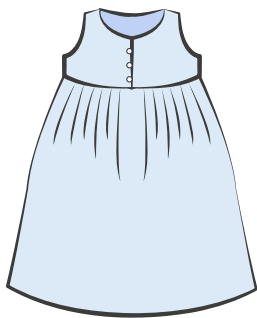
과도한 노출 등 금지

여미는 깃 형태 유지, 고름·매듭 방식은 관계 없음

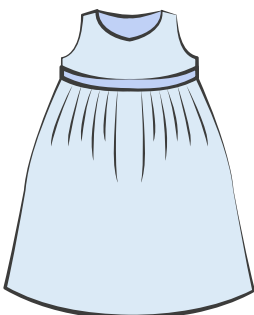


통치마·풀치마 등 형식 제한 없음

통치마



풀치마
(앞)



풀치마
(뒤)

